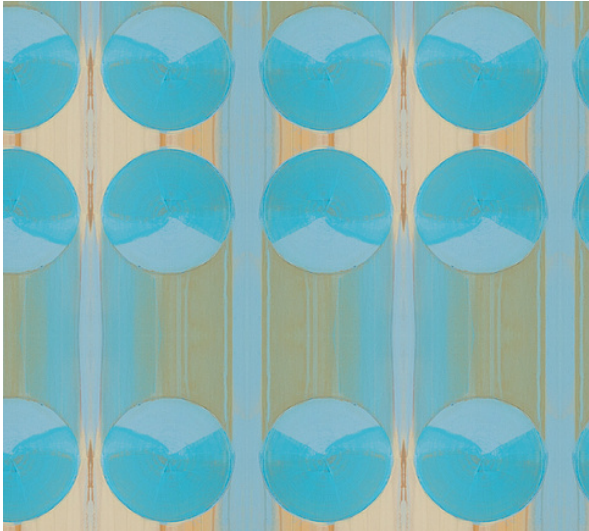


# BLUE DECO PATTERN



## FABRIC SPECIFICATIONS

- Ground Cloth: Mid-Weight Cotton and 7.8 Oyster Blend
- Width: 54"
- Pattern Repeat: 11.5" x 9"
  
- Minimum Order: 2 yards
- Lead Time: 3-4 weeks

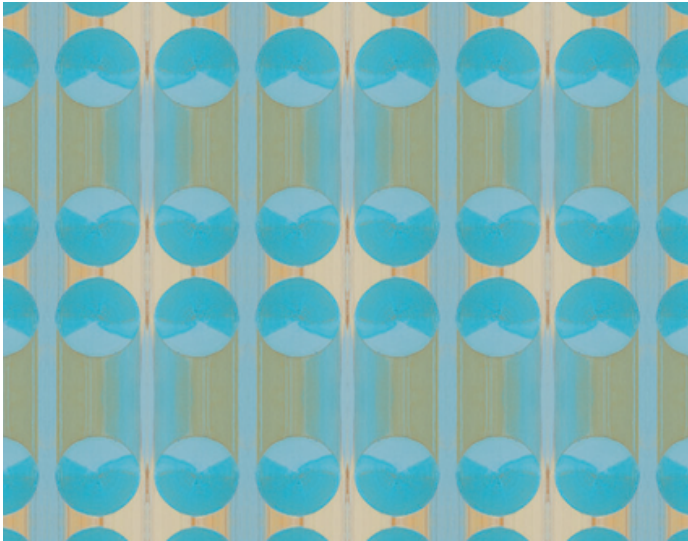
## WALLPAPER SPECIFICATIONS

### Non-Woven Fibre:

- Width: 27" trimmed
- Suitable for residential and low-traffic areas

### Type II:

- Width: 54" trimmed
- PVC-Free
- Suitable for commercial and high-traffic areas
  
- Pattern Repeat: 11.5" x 9"
- Match: Straight
- Sold by the Linear Yard
- Minimum Order: 5 yards
- Lead Time: 4-6 weeks



---

## OTHER ATTRIBUTES

- Sustainable manufacturing process
- Highly durable ink pigment set
- No chemicals
- Unparalleled wash and rub results
- High UV Fastness
- Completely waterless softening process (non toxic in-line treatment process)
- Zero water waste



## NOTES ON THE DIGITAL PRINTING PROCESS:

- Our digital pigment printing process is the most sustainable textile printing technique, as it uses less energy, produces zero water waste and has a small overall carbon footprint.
- This process virtually eliminates the consumption of water and the discharge of noxious effluents (liquid waste discharged into a river or sea), by using low volumes of liquid dispersions of pigment colors, resulting in a positive environmental impact.
- The streamlined technology includes a softener that is applied in-line during the printing process, providing an extremely efficient and eco-friendly solution to creating a softer hand feel.
- Our one-step printing process also removes the need for water and energy greedy post processing, since color fastness is achieved by heat fixation alone, as opposed to lengthy steam fixation and washing off procedures which typically require numerous chemicals and contaminants during these processes.
- Currently, standard textile dyeing and printing is one of the biggest sources of pollution worldwide and we are dedicated to not adding to this major environmental issue.

